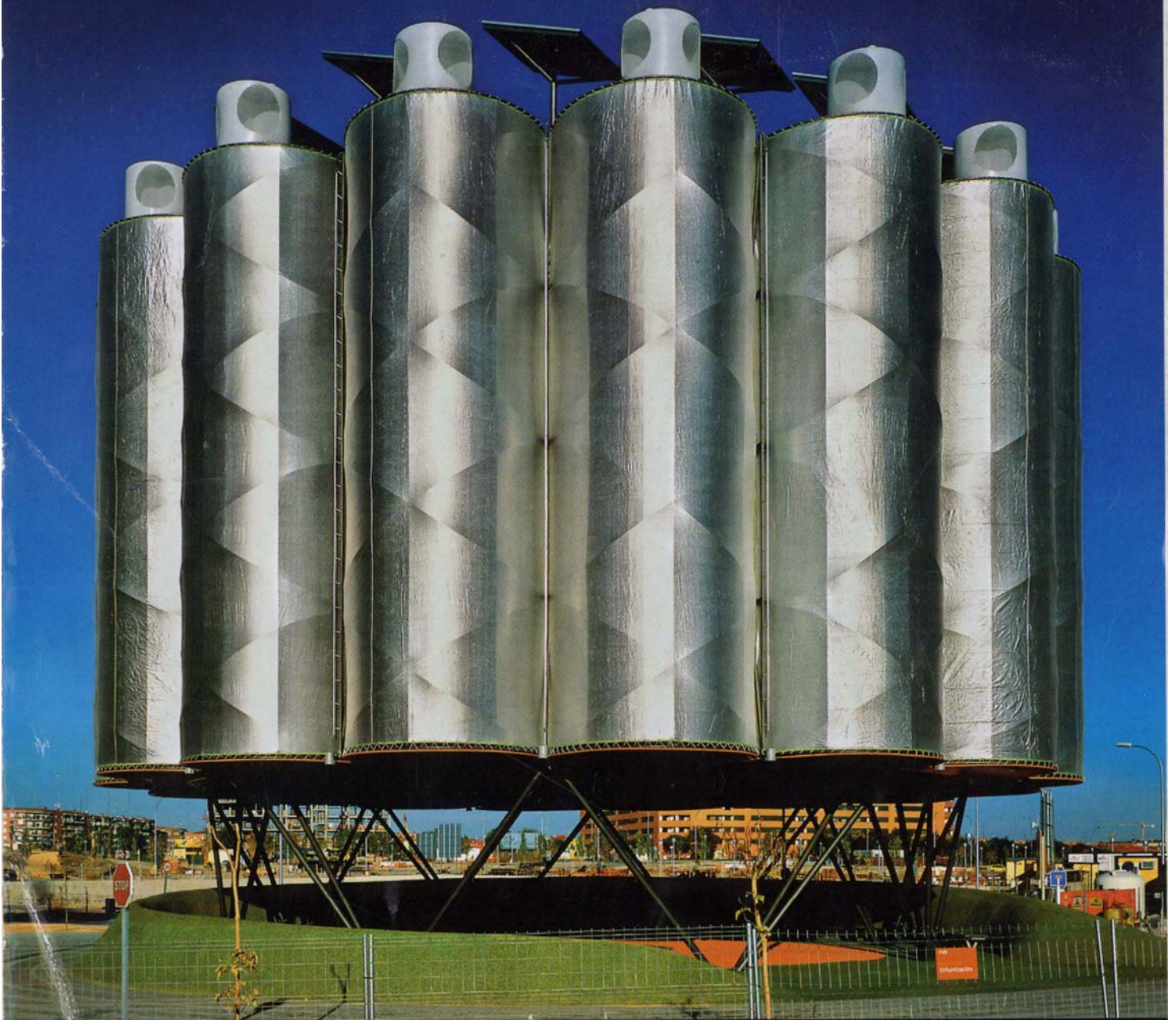


A JOURNAL OF INDIAN ARCHITECTURE VOL XXIV NO 4 APRIL 2007 RS 125

ARCHITECTURE + DESIGN



● INTERNATIONAL FEATURES ● ARCHITECTURE AWARDS ● ART MUSINGS

Jury Comments

Principal Awardee: Rivet Boutique Store, Bangalore

A 'brutality' in plan; shows the use of materials in a nice innovative way, with display of goods hanging from ceilings, etc. Sensitivity can be perceived in the use of different materials- bottle, leather, wood, concrete, glass, etc. A ramshackle approach but brings out warmth to the store with a mix 'n' match of things. The project can be termed as a symbol of progressive thinking.

Commendation: Roxy, Cocktail Bar at Park Hotel, Kolkata

A simple shell insert has made the project powerful. It has also capitalised on the singular idea of reinstating the whole fabric and recognising the importance of the play of light. A good contrast has been achieved with materials that are used like old and new, rustic and sleek. It is like a new insertion in an old thing. The wall as the focal point comes across as highly tactile- a combination of steel and glass. The project is also respectful to what is original. Appropriate selection of furniture played an important role in the overall theme. The project is backed by various elements. The ambience is great and the idea simple. There is also something special about the floating sitting area- it is modern in a rustic shell.

Special Mentions:

Wrap 3 at Calicut, Kerala

The strength and singularity of the idea impressed the jury. A brave use of colour with playful consistency, quite appropriate as it is a primary and secondary school.

Architect's Own Office in Bangalore

An earthy and 'unmodern approach'. The resulting character communicates a strong personal message to its viewers. The project rejects modernism in life. It makes use of natural light. Colour adds warmth to it, as it is not reliant on artificial light. The project is able to achieve a welcoming feel. An almost honest approach has been made in this project.

A Combination of Restaurants in Bangalore

The project is very elegant and shows a sustained effort of the architect. Colour is not used in the scheme. There is a grounded order about it, which keeps its simplicity. The wall is its dynamic feature with quiet corners. The project is able to display a subtle shift and change in experiences from one place to another. It is rich, at the same time simple, not overdone and very comfortable. There is an air of sophistication and a sense of order about it with a controlled balance.



Hin Tan



Sanjay Mohe



S Ragupathy



Pn Azrina Arshad

Principal Awardee	Lotus Design Services, New Delhi
Commendation	Khosla Associates, Bangalore
Special Mentions	Planet 3 Studios Architecture, Mumbai
	Collaborative Architecture, Mumbai
	Fountainhead 04, Bangalore

Jury Members



Extreme left: The Innovative Interior Design jury at work. (L to R): Malaysian architects Hin Tan, S Ragupathy and Pn Azrina Arshad.

Left: Post jury photograph after The Innovative Interior Design category meet. (L to R): S Ragupathy, Malaysia; Sanjay Mohe, Bangalore; Pn Azrina Arshad, Malaysia; Hin Tan, Malaysia; along with Inderjit Arora, MD Spectrum Paints and Suneet Paul (a+d), as moderator for the event.



Kalhan Mattoo



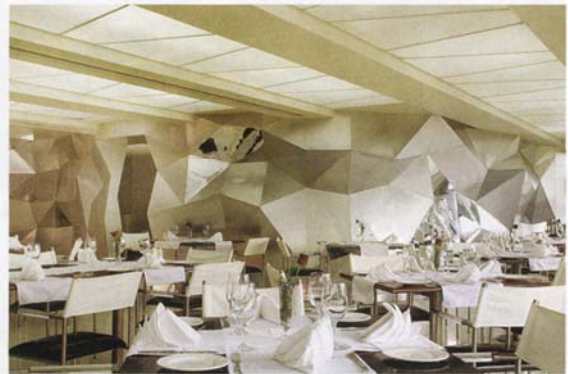
Santha Gour Mattoo



Jainish Jani



Jyoti Gujran



Special Mention

Planet 3 Studios Architecture, Mumbai
T Crossover, Ville Chaumiere, Tube, Bangalore

The design brief was a multi-cuisine veg restaurant; fine dine restaurant, lounge bar and a barbeque-cum-grill all under one roof. In the 'veg' restaurant called "T Crossover", the creativity was focused on one focal element and one material to make a powerful visual statement: the partition dividing the dining space and the host area was turned into a massive undulating surface, a carapace covered in steel. Externally, the lounge called "Tube" was clad with silver galvalum sheets. Inside, dramatics was created with shades of blue. A toughened clear glass with the exposed steel frame below forms the dance floor. Internally, the Tube is lined with heavy foam quilting from all sides. The structure of the fine dine called the "Ville Chaumiere", is of MS, the element of focus is the 19' high ceiling where the structural

support is sculpted to represent branches of a tree and cut outs in the ceiling represent the leaves. The outdoor barbeque and grill called 'Fire and flakes' complement the spaces around it with white gravel floor. ✚

Client U V Hospitality

Design team Principal architects: Kalhan Mattoo & Santha Gour Mattoo; Assistance: Jainish Jani & Jyoti Gujran

Prime contractor Planet 3 Studios

Principal consultants Total Concepts

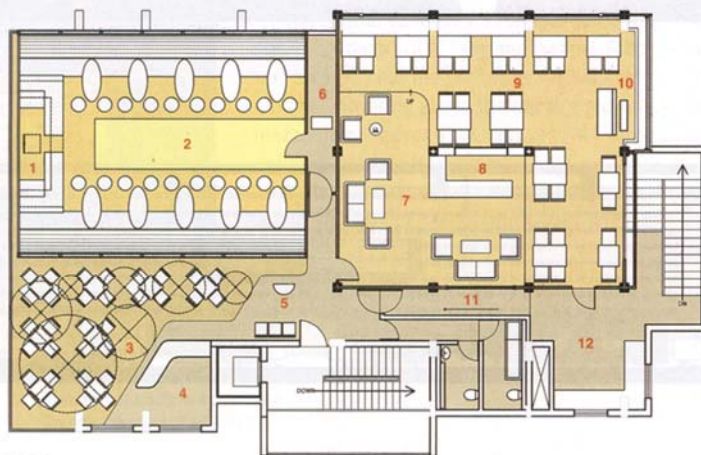
Area 8,000sq ft

Cost of project Rs 1 crore

Delivery Design Consultancy

Duration of construction 5 months

Year of completion 2005



PLAN

- | | |
|-------------------|---------------------------|
| 1. Bar counter | 7. Wine lounge |
| 2. Lounge | 8. Wine rack |
| 3. Open café area | 9. Fine dining |
| 4. Outdoor grill | 10. Water screen |
| 5. Hostess desk | 11. Service corridor/ramp |
| 6. Bouncers desk | 12. Pantry |

