

Inside Outside

THE INDIAN DESIGN MAGAZINE

ISSUE 189

MAY 2016

Rs 50

Brinda Somaya
designs a sprawling
bungalow in Indore

**The ingenuity of
different designers
comes together in
the Majestic Hotel,
Singapore**

**Ajit Shilpi designs a
Mumbai Apartment**

**A holiday home in Goa
bags an IIID MK award
for Girish Karnawat**


The Dungarpur palace combines the contemporary and the old world

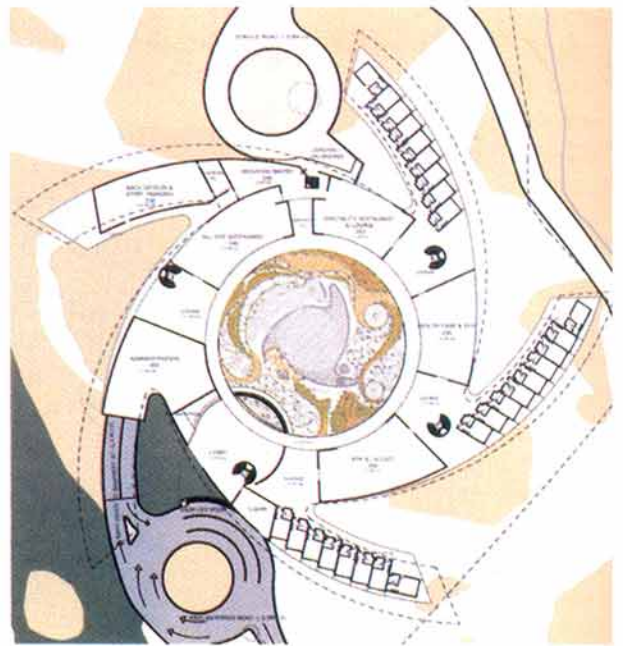
Panoramic Views



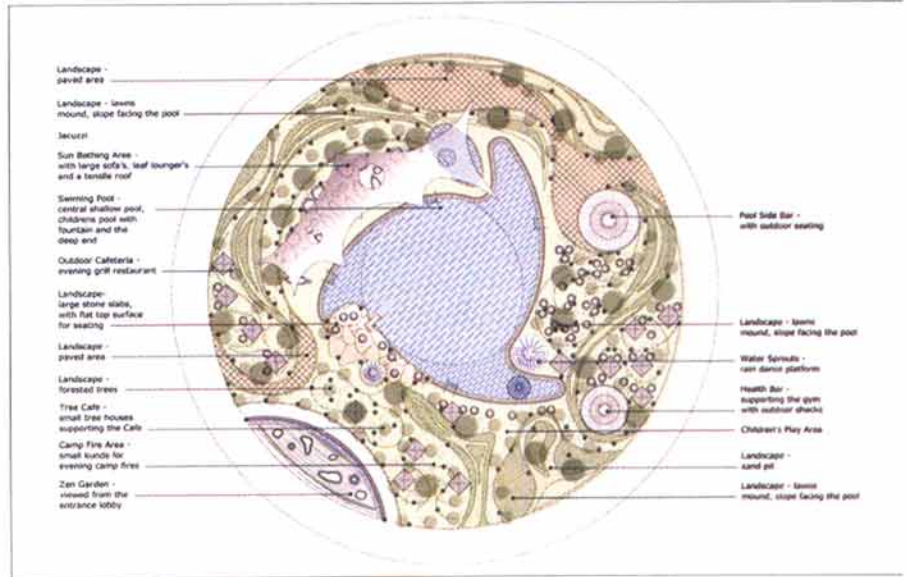
Planet 3 Studios Architecture Pvt Ltd, designs a hotel with a clever twist.

Mumbai firm Planet 3 Studios Architecture Pvt Ltd, wins an invited competition for the design of the new Panoramia Hotel at Karnala, in India. Their dramatic, spiralling design was awarded for its ability to maximise views of the lush green surroundings of a local bird sanctuary.

While local building codes restricted the structure to ground plus one floor, the client requirement of an iconic property that combined the best of a dispersed format resort and a monolithic hotel provided the point of inspiration for this remarkable design. Radiating from a central core with restaurants, spa, health club, café, a large pool and suites on the upper level, five arms extend into the landscape with outward-facing rooms on two floors. Balconies connected with each room offer privacy and a unique view of the outdoors. The building skin is engineered in horizontal louvres to moderate the harsh tropical sun. At night, some of these louvres light up in subtle colours, suggesting magical lanterns that float in the air. 



Groundbreaking expected in mid 2010



Design Team
Kalhan Mattoo, Santha Gour Mattoo, Kartik Nayani, Amey Kandalganka

